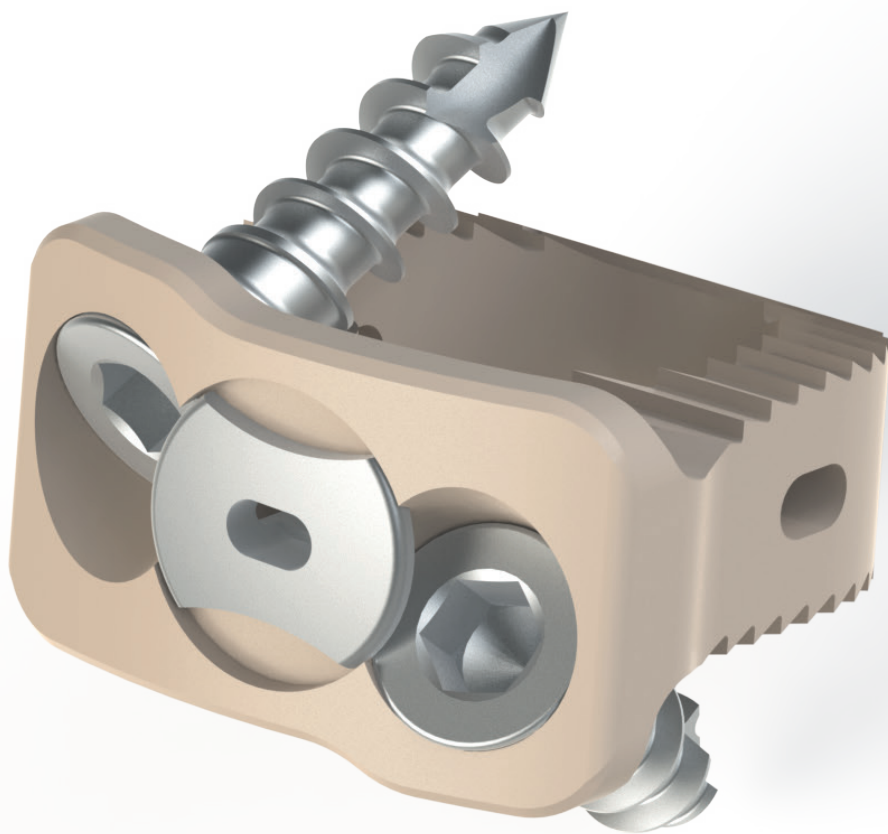


DIVA Crown

La Cage Cervicale Bloquée
The Blocked Cervical Cage

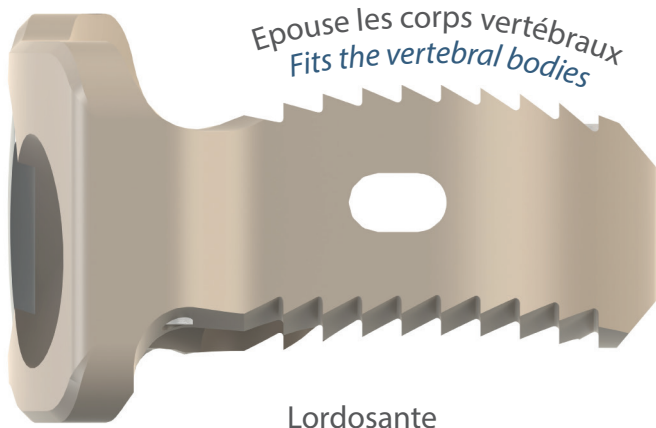


NovaSpine

IMPLANTS

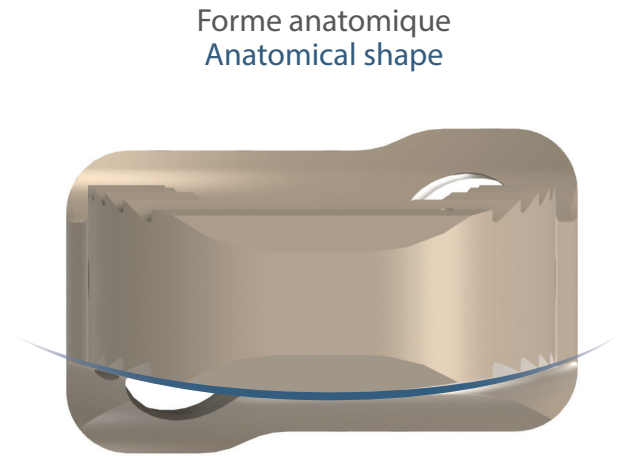
Specifications

Fabriqué en
Made of
PEEK



Epouse les corps vertébraux
Fits the vertebral bodies

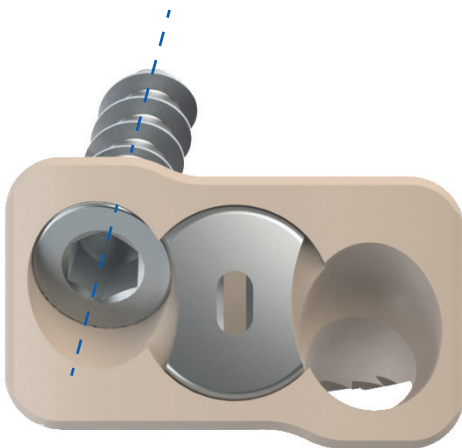
Lordosante
Lordotic



Forme anatomique
Anatomical shape

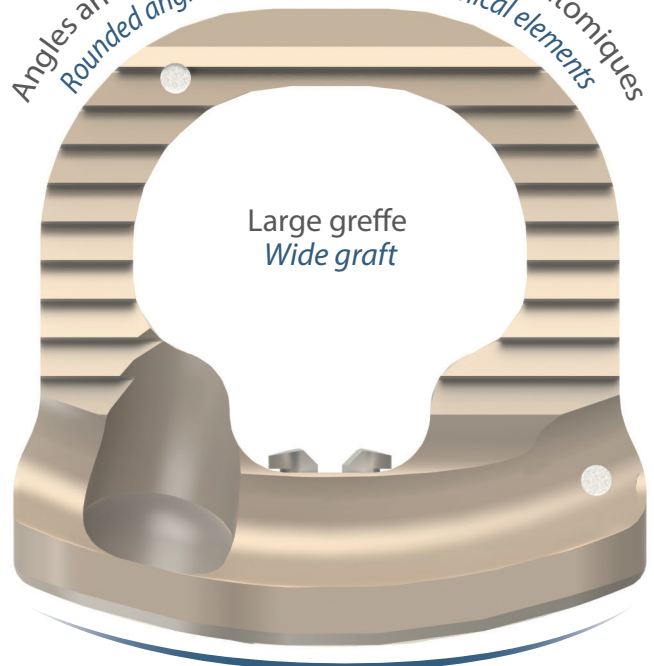
Convexe
Convex

Vis orientées vers l'intérieur
Inward oriented screws



Vis en Titane
Titanium Screws

Angles arrondis respectant les éléments anatomiques
Rounded angles respecting the anatomical elements



Large greffe
Wide graft

Profil affleurant
Flush profile

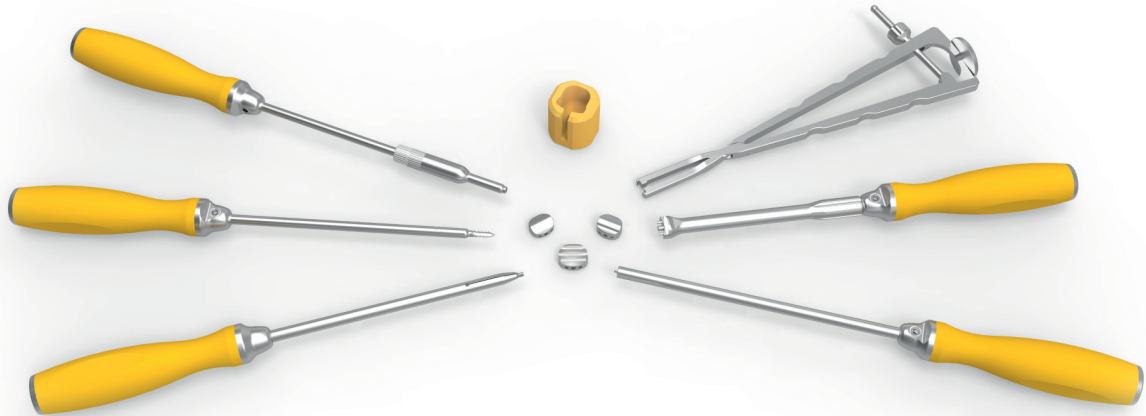
REVENDEICATIONS / CLAIMS

La cage intersomatique cervicale DIVA est utilisée pour le traitement chirurgical des discopathies cervicales, chez le patient ayant atteint sa maturité squelettique.

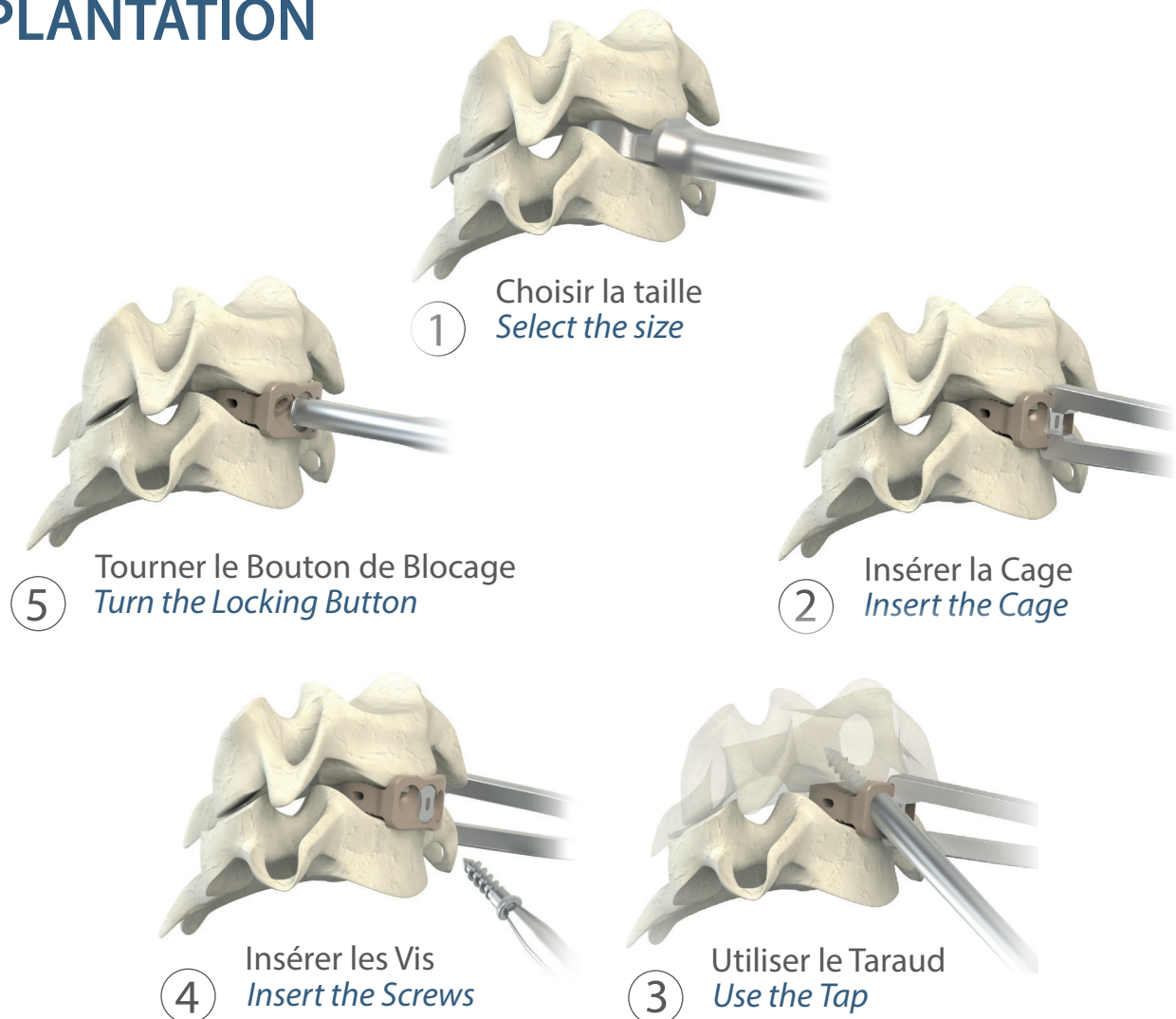
Elle assure la stabilisation des segments rachidiens comme complément à la fusion intersomatique et aide à réduire la douleur et le handicap.

The inter somatic cervical cage DIVA is used for the surgical treatment of cervical discopathies for skeletally mature patients. It ensures the stabilization of spinal segments as a complement to inter somatic fusion and contributes to the reduction of pain and disability.

INSTRUMENTS



IMPLANTATION

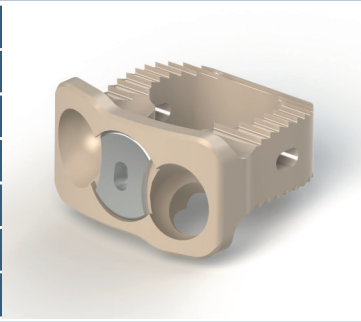


DIVA Crown

La Cage Cervicale Bloquée
The Cervical Blocked Cage

IMPLANTS Cage / Cage

Standard	Taille / Size	Small	Taille / Size
DCB24	4	DCSB24	4
DCB25	5	DCSB25	5
DCB26	6	DCSB26	6
DCB27	7	DCSB27	7
DCB28	8	DCSB28*	8
DCB29*	9		



Vis / Screws



	Ø3.5	Ø3.9
L.10	DVC10	DVR10
L.12	DVC12	DVR12
L.14	DVC14	DVR14
L.16	DVC16	DVR16
L.18	DVC18	DVR18
L.20	DVC20	DVR20

INSTRUMENTS

DCR504	Râpe Cervicale <i>Cervical Rasp</i>	DCDC304	Implant d'Essai T.4 <i>Trial Implant S.4</i>
DIC102	Impacteur Implant d'Essai et Râpe <i>Trial Implants and Rasp Impactor</i>	DCDC305	Implant d'Essai T.5 <i>Trial Implant S.5</i>
DCIPC133	Impacteur de Cage <i>Cage Impactor</i>	DCDC306	Implant d'Essai T.6 <i>Trial Implant S.6</i>
DCIC127*	Impacteur de Cage Droit <i>Straight Cage Impactor</i>	DCDC307	Implant d'Essai T.7 <i>Trial Implant S.7</i>
DCPC128	Pointe Carrée <i>Awl</i>	DCDC308	Implant d'Essai T.8 <i>Trial Implant S.8</i>
DCTA129	Taraut <i>Tap</i>	DCDC309*	Implant d'Essai T.9 <i>Trial Implant S.9</i>
DCTP130	Tournevis <i>Screwdriver</i>	DCCS404	Implant d'Essai Small T.4 <i>Trial Implant Small S.4</i>
DCTBB131	Tournevis Bouton de Blocage <i>Locking Button Screwdriver</i>	DCCS405	Implant d'Essai Small T.5 <i>Trial Implant Small S.5</i>
DCSCB134	Support Cage <i>Cage Holder</i>	DCCS406	Implant d'Essai Small T.6 <i>Trial Implant Small S.6</i>
ACDICR-A	Container	DCCS407	Implant d'Essai Small T.7 <i>Trial Implant Small S.7</i>

* Commande spéciale / *Special order*

CE0086



NovaSpine

335, rue Saint Fuscien
80090 Amiens - France

Tél : 00 33 (0)3 22 50 07 31
Fax : 00 33 (0)3 22 46 34 35
e-mail : contact@novaspine.fr

Distributed by: