



BIOABSORBABLE SUTURE ANCHOR

BA | BIOABSORBABLE ANCHOR

ARTHROVFIX[®]



 **SPORT
MEDICINE**
ADVANCED TECHNOLOGY

BIOABSORBABLE SUTURE ANCHOR

It is specially designed for rotator cuff repair and biceps tenodesis.

ARTHROFIX is a bioabsorbable suture anchor mounted on a single-use screwdriver assembled with two sutures composed of UHMWPE (USP2).

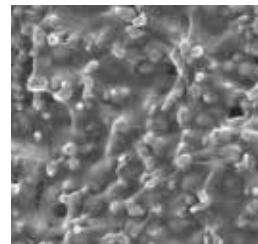


COMPOSITION

Bioabsorbable biocomposite polymer:
70% **PLA** (Polylactic Acid)
30% of **β-TCP** (tricalcium phosphate).

β-TCP particles are sub-micron sized and homogeneously distributed within the PLA matrix, in addition, they are agglomerates free for a better bone integration.

TCP keeps a neutral PH by buffer effect, the resorption speed is thus increased without risk of inflammation.



PLA / β-TCP composite (x10 000 MET)*



Distortion of the thread during resorption *

■ Bone growth ■ Implant

INSERTION



Threading*



Easy implantation*



ADVANTAGES

- BIOCOMPOSITE
- HOMOGENEOUS PLA/TCP POLYMER
- BIOCOMPATIBLE
- DOUBLE THREAD
- RESORPTION SPEED CONTROLLED
- HIGH MECHANICAL PROPERTIES

PROPERTIES

Its **double thread** allows an increase of the pull out strength of the anchor.

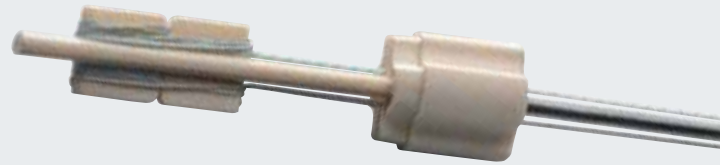
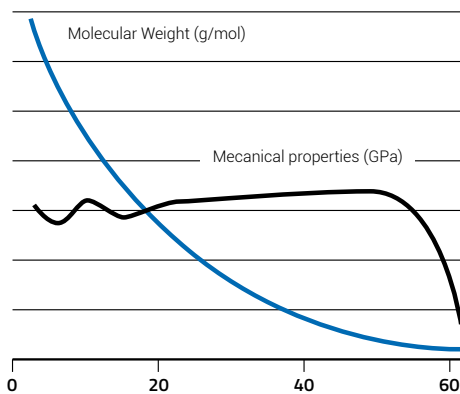
High mechanical properties improved by the **homogeneous distribution of the TCP particles** within the PLA matrix.

Biocompatible

Controlled resorption speed thanks to PLA material which degrades through hydrolysis and TCP particules which increase resorption speed.

Mechanical properties are maintained for 6 months and the anchor is no longer detectable after **24 months**.

RESORPTION+ (weeks)



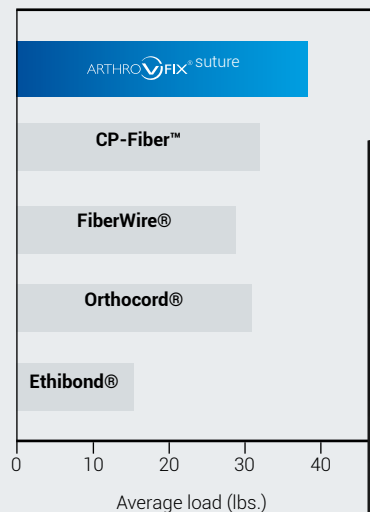
SUTURE

The USP2 sutures are made of UHMWPE (Ultra High Molecular Weight Poly Ethylene) Each suture is maintained in a dedicated handle which prevents them from becoming tangled.

PROPERTIES

- High tensile strength
- Suture material and braiding make sliding smoother, but once in position knots are strongly tightened.
- The sutures allow tighter loop security during the tying process and superior knot break strength than competitors.

Knot Tensile+



SUTURE ADVANTAGES

- HIGH TENSILE STRENGTH
- SMOOTH KNOT SLIDING
- THREADS CANNOT BECOME ENTANGLED
- SOLIDITY AND SECURITY OF THE SUTURES



STORAGE

ARTHROFIX must be stored in its original unopened packaging, in a clean and dry place, at ambient temperature (maximum 37°C).

PRODUCTS & INSTRUMENTATION

ARTHROFIX anchor is packaged in a blister itself sealed in an aluminum pouch and sterilized by ethylene oxide.

Single use. Do not re-sterilize.

Instrumentation for arthroscopic procedures is available.
ARTHROFIX must be used with the corresponding tap supplied by VIMS.

For any further information, please refer to the IFU.

DESIGNATION	Size	Reference
ARTHROFIX Ø 5.5 ANCHOR	5,5	10001398-1
ARTHROFIX Ø 6.5 ANCHOR	6,5	10001398-2
TAP ARTHROFIX Ø5.5	5,5	TARAUD_5.5
TAP ARTHROFIX Ø6.5	6,5	T067231

 **0086**
CLASSE III / ARTHROFIX

 **CLASSE I NOT STERILE / INSTRUMENTATION**

*Datas provided by the manufacturer

Document design date : Mai 2019 - Range : Bioabsorbable suture anchor -
Manufacturer : TEKNIMED - Brand Name : ARTHROFIX - Medical Device Class:III
CE Mark N°: 0086 - Manufacturer : VIMS - Brand Name : Pointeau taraud
ARTHROFIX - Medical Device Class : I non stérile - User : Health professional
Indications : Rotator cuff repair and biceps tenodesis - Recommendations for
use: it is highly recommended to read the labels and the IFU.



VIMS SA
10 AVENUE DE FONTRÉAL - EUROCENTRE
31620 VILLENEUVE LES BOULOC - FRANCE
TÉL. +33 5 34 45 09 09 - FAX. +33 5 61 22 85 84

VIMS-SYSTEM.COM